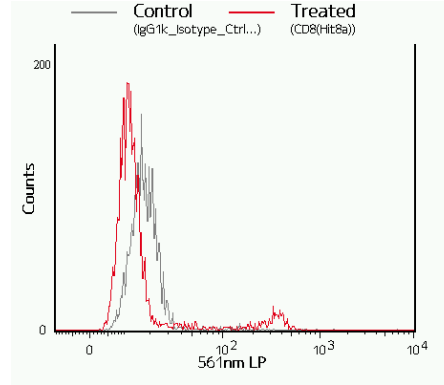
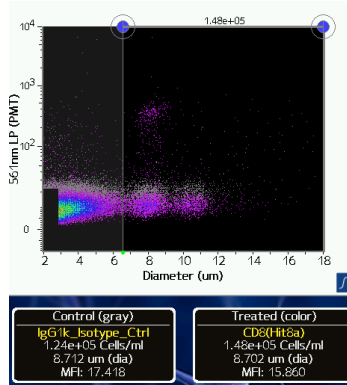


## Anti-Human CD8a PE

**Catalog #:** 300907 (25 tests); 300908 (100 tests)

**Alternative names:** CD8-alpha, Leu-2a

**RUO: For Research Use Only**, manufactured by BioLegend



Staining of PMBC cells with Anti-Human CD8-PE (red) vs mIgG1k Isotype control (gray).

### Product information

**Clone:** HIT8a

**Concentration:** 5-20µL/test

**Host/Isotype:** Mouse IgG1, K

**Formulation:** PBS (pH 7.2), 0.09% sodium azide

**Temperature Storage:** Store at 2-8°C. Light sensitive

**Use By:** See vial for Lot specific info

### Description *(from www.BioLegend.com)*

CD8a is a 32-34 kD type I glycoprotein. It forms a homodimer (CD8a/a) or heterodimer (CD8a/b) with CD8b. CD8, also known as T8 and Leu2, is a member of the immunoglobulin superfamily found on the majority of thymocytes, a subset of peripheral blood T cells, and NK cells (which express almost exclusively CD8a homodimers). CD8 acts as a co-receptor with MHC class I-restricted T cell receptors in antigen recognition and T cell activation and has been shown to play a role in thymic differentiation. Two domains in CD8a are important for function: the extracellular IgSF domain binds the  $\alpha_3$  domain of MHC class I and the cytoplasmic CXCP motif binds the tyrosine kinase p56 Lck.

### Applications Tested

This antibody has been pre-titrated and tested by flow cytometric analysis of normal human peripheral blood cells. Cell number should be determined empirically but can range from 10e5 to 10e8 cells/test. Following staining, the optimal concentration for fluorescence sensitivity on the Moxi Go is 1e5 to 5e5 cells/mL.

### Related Products

400112 PE Mouse IgG1,K Isotype Control PE

**References:** S., L. Bloumsell, et al. eds. 1995. Leucocyte Typing V: White Cell Differentiation Antigens. Oxford University Press. New York.