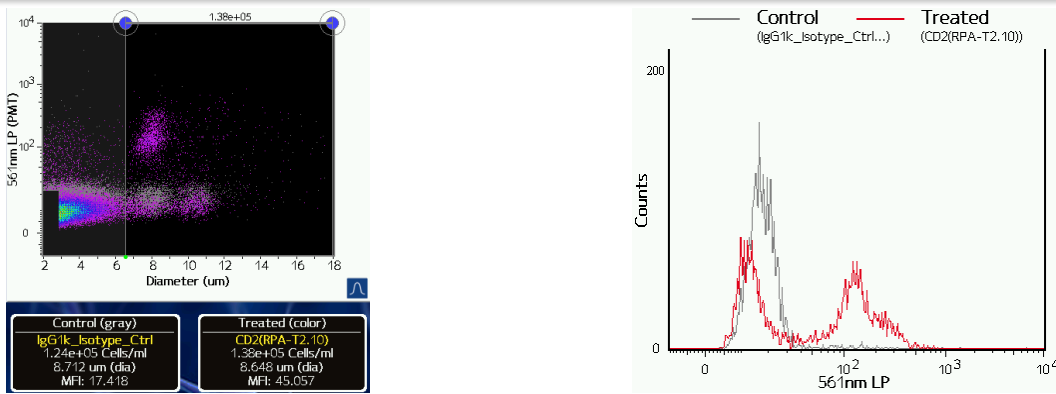


Anti-Human CD2 PE

Catalog #: 300207 (25 tests); 300208 (100 tests)

Alternative names: LFA-2, T11, SRCB-R

RUO: For Research Use Only, manufactured by BioLegend



Staining of PMBC cells with Anti-Human CD2-PE (red) vs mIgG1k Isotype control (gray).

Product information

Clone: RPA-2.10

Concentration: 5-20µL/test

Host/Isotype: Mouse IgG1, K

Formulation: PBS (pH 7.2), 0.09% sodium azide

Temperature Storage: Store at 2-8°C. Light sensitive

Use By: See vial for Lot specific info

Description *(from www.BioLegend.com)*

CD2 is a 50 kD type I transmembrane glycoprotein also known as LFA-2, T11, and sheep red blood cell receptor (SRBC-R). This immunoglobulin superfamily member is expressed on thymocytes, T lymphocytes, NK cells, and thymic B cell subsets. The major ligand for CD2 is CD58 (also known as LFA-3). CD2 has also been reported to bind CD48, CD59, and CD15. CD2 plays a critical role in alternative T cell activation, T cell signaling, and cell-cell adhesion.

Applications Tested

This antibody has been pre-titrated and tested by flow cytometric analysis of normal human peripheral blood cells. Cell number should be determined empirically but can range from 10e5 to 10e8 cells/test. Following staining, the optimal concentration for fluorescence sensitivity on the Moxi Go is 1e5 to 5e5 cells/mL.

Related Products

400112 PE Mouse IgG1,K Isotype Control PE

References: Knapp W, *et al.* Eds. 1989. Leucocyte Typing IV. Oxford University Press. New York.