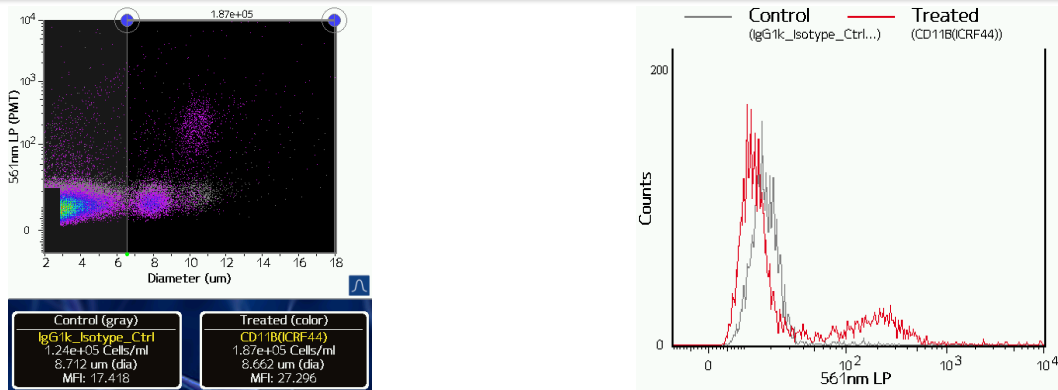


Anti-Human CD11b PE

Catalog #: 301305 (25 tests); 301306 (100 tests)

Alternative names: Integrin α_M chain, C3biR, CR3, Mac-1, Mo1, ITGAM

RUO: For Research Use Only, manufactured by BioLegend



Staining of PMBC cells with Anti-Human CD11b-PE (red) vs mIgG1k Isotype control (gray).

Product information

Clone: ICRF44

Concentration: 5-20 μ L/test

Host/Isotype: Mouse IgG1, K

Formulation: PBS (pH 7.2), 0.09% sodium azide

Temperature Storage: Store at 2-8°C. Light sensitive

Use By: See vial for Lot specific info

Description *(from www.BioLegend.com)*

CD11b is a 165-170 kD type I transmembrane glycoprotein also known as α_M integrin, Mac-1, CR3, and C3biR. CD11b non-covalently associates with integrin β_2 (CD18) and is expressed on granulocytes, monocytes/macrophages, dendritic cells, NK cells, and subsets of T and B cells. CD11b/CD18 is critical for the transendothelial migration of monocytes and neutrophils. It is also involved in granulocyte adhesion, phagocytosis, and neutrophil activation. CD11b/CD18 interacts with ICAM-1 (CD54), ICAM-2 (CD102), ICAM-4, CD14, CD23, heparin, iC3b, fibrinogen, and factor X.

Applications Tested

This antibody has been pre-titrated and tested by flow cytometric analysis of normal human peripheral blood cells. Cell number should be determined empirically but can range from 10e5 to 10e8 cells/test. Following staining, the optimal concentration for fluorescence sensitivity on the Moxi Go is 1e5 to 5e5 cells/mL.

Related Products

400112 PE Mouse IgG1,K Isotype Control PE

References: Knapp W. 1989. Leucocyte Typing IV. Oxford University Press New York